

# CPA Circuit Board & Wiring

**C1**

Pin No.	Pin Name	Wire Color	Destination
1	+15'	BR	JK-15' (C1-5)
2	HR	RE	JK-HR (C1-2)
3	HL	WH	JK-HL (C1-1)
4	E	BL	JK-E (C1-3)
5	E	S BR S	
6	OUT	S BR	JK-OUT (C1-7)
7	FC	GR	JK-FC (C1-4)

**C6**

Pin No.	Pin Name	Wire Color	Destination
1	E	S OR S	
2	PBO	S OR	CPA-ST (C4-4)
3	E	S GR S	
4	PBI	S GR	CPB-ST (C5-2)
5	E	S YE S	
6	OBI	S YE	CPB-OO (C2-2)
7	E	S RE S	
8	OBO	S RE	CPA-OR (C4-2)

**C2**

Pin No.	Pin Name	Wire Color	Destination
1	VTR	BE	DM-TR (C7-2)
2	S	VI	TE-S (C3-1)
3	TE	GY	TE-T/E (C3-2)
4	IC	WH	DM-IC (C4-2)
5	IC	WH	CPA-IC (C4-1)
6	NC	-	
7	VM	GG	DM-VM (C4-1)

**C3**

Pin No.	Pin Name	Wire Color	Destination
1	-15A	YE	CPB--15A (C4-2)
2	-15A	-	
3	E	BL	CPB-E (C4-5)
4	E	-	
5	+15A	BR	CPB+15A (C4-7)
6	+15A	-	
7	E	S GG S	
8	TEO	S GG	TE-I (C2-4)
9	E	S SB S	
10	TEI	S SB	TE-O (C3-3)

**C4**

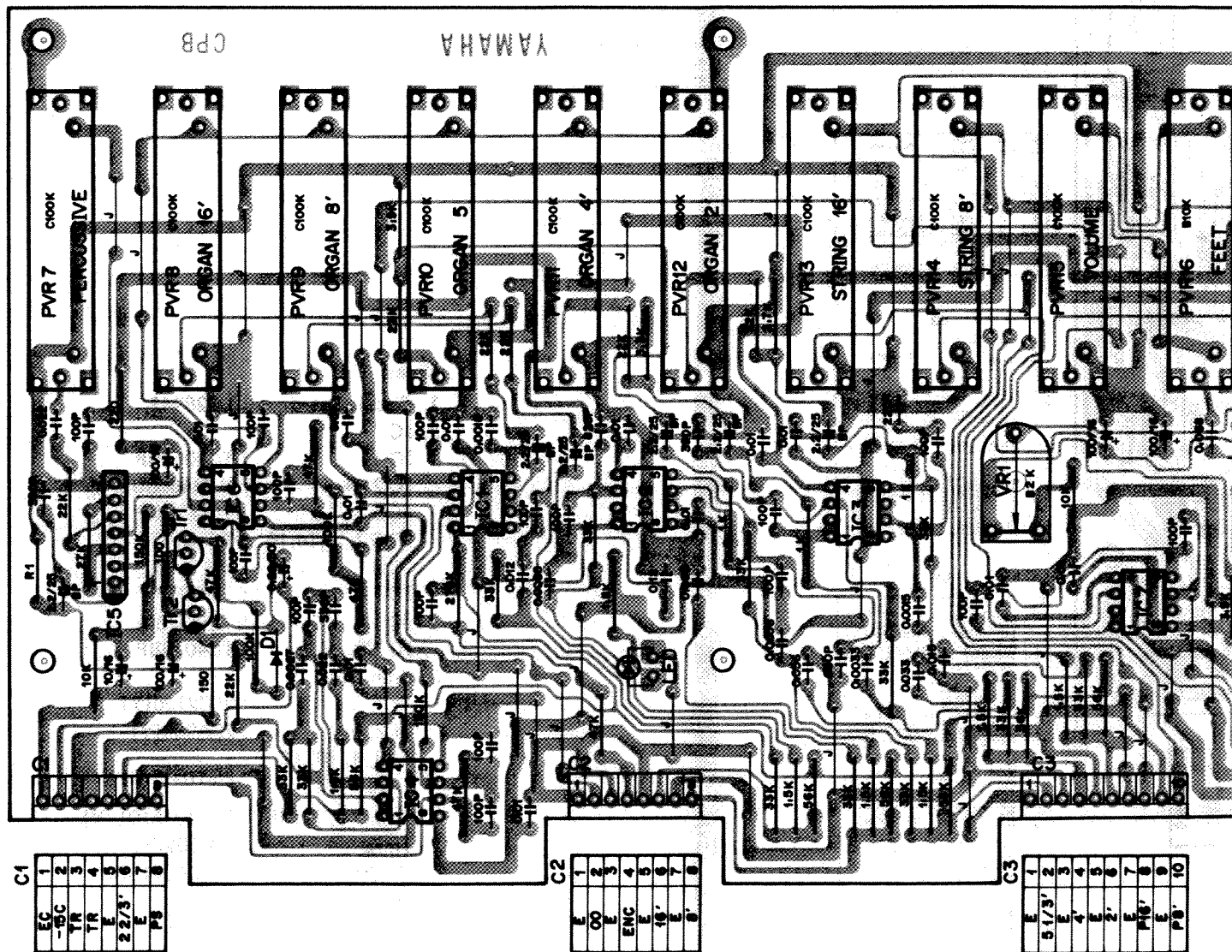
Pin No.	Pin Name	Wire Color	Destination
1	IC	WH	CPA-IC (C2-5)
2	OR	S RE	CPA-ORO (C6-8)
3	E	S RE S	
4	ST	S OR	CPA-PBO (C6-2)
5	E	S OR S	
6	PS	S YE	CPA-PS (C1-8)
7	E	S YE S	CPB-PS (C1-8)

**C5**

Pin No.	Pin Name	Wire Color	Destination
1	-15D	YE	DC--15 (C1-2)
2	-15D	-	
3	Vss	BL	DC-E (C2-8)
4	Vss	-	
5	SO	S GR	DM-SI (C4-7)
6	Vss	S GR S	
7	φM	S BE	DM-φM (C4-3)
8	Vss	S BE S	
9	SY	S VI	DM-SY (C4-5)
10	Vss	S VI S	

## Notes)

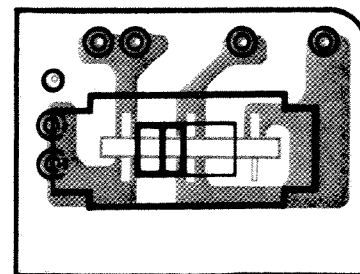
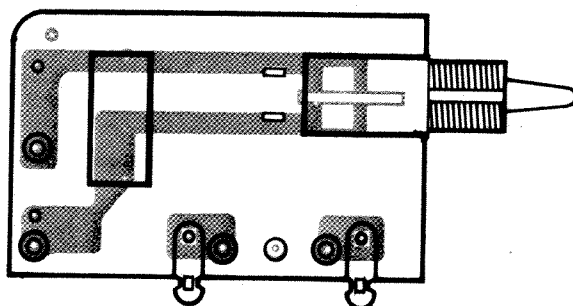
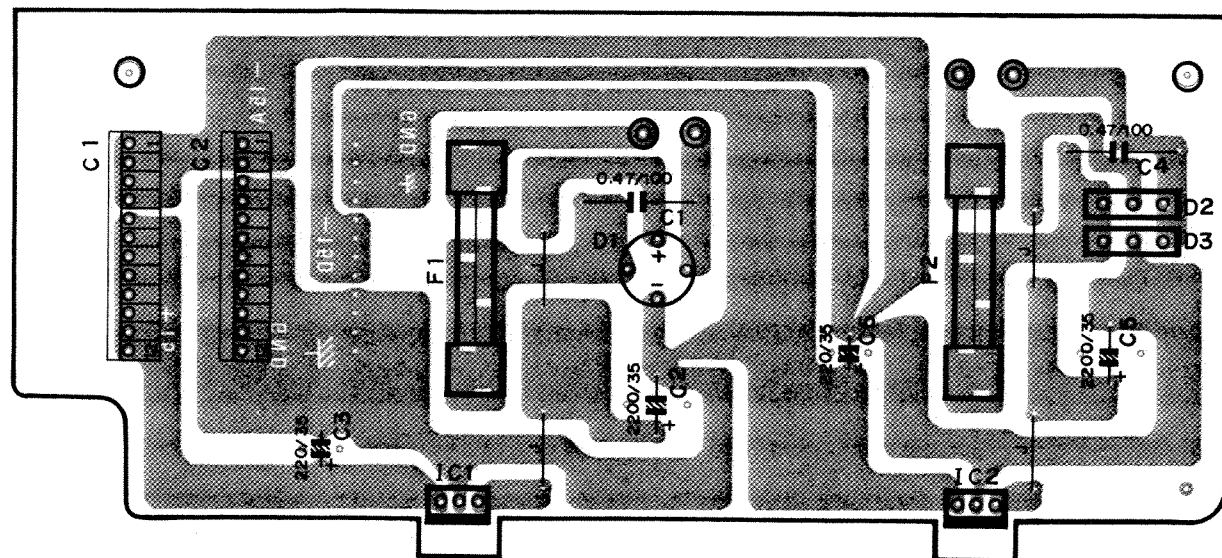
1. Circuit Board : LC28942
2. IC
  - IC 1 : TC4053BP
  - IC 2~4, 17 : NJM4558DV
  - IC 5, 9, 13 : TC4093BP
  - IC 6,7,10,14,15 : TC4013BP
  - IC 8 : YM62600
  - IC 11 : iG03280
  - IC 12 : YM62700
  - IC 16 : TC4016BP
3. Transistors
  - Tr 1 : 2SC2120(Y)
  - Tr 2, 5 : 2SA950(Y)
  - Tr 3, 4, 10, 11, 16~18 : 2SC1815(O) (Y)
  - Tr 6~9, 14, 15 : 2SA1015(O) (Y)
  - Tr 12 : 2SC752(Y)
  - Tr 13 : 2SA1164(GR)
4. Diodes
  - D1~4 : 1S1555
5. Photo Coupler
  - PC : P873-G35-201B



## TE • JK • DC Circuit Board & Wiring

HL
HR
E
FC
+15'
OUT
E

.C 28942



Pin No.	Pin Name	Wire Color	Destination
1	-15	YE	DM- -15D (C1-2)
2	-15	YE	CPA- -15D (C5-1)
3	-15	YE	DM- -15A (C7-10)
4	-15	YE	CPB- -15A (C4-1)
5	+15	BR	DM-+15D (C1-1)
6	+15	BR	CPB+15A (C4-6)
7	+15	BR	DM-+15A (C7-4)
8	+15	BR	TE+15 (C1-1)
9	+15	-	-
10	+15	-	-
11	+15	-	-
12	+15	-	-

C2			
Pin No.	Pin Name	Wire Color	Destination
1	-15	YE	TE--15 (C1-7)
2	-15	YE	CPB--15C (C1-2)
3	E	BL	DM-V <sub>ss</sub> (C1-4)
4	E	BL	DM-V <sub>ss</sub> (C1-5)
5	E	BL	DM-E (C7-6)
6	E	BL	CPB-E (C4-3)
7	E	BL	CPA-E (C4-4)
8	E	BL	CPA-V <sub>ss</sub> (C5-3)
9	E	BL	CPB-EC (C1-1)
10	E	BL	CPB-EC (C5-4)
11	E	BL	TE-E (C1-4)
12	E	RI	FP-1

## Notes)

1. Circuit Board : LC 85553  
2. IC  
IC 1,2 :  $\mu$ PC14315H  
3. Diodes  
D1 : 1D4B1  
D2 : 1D2C1  
D3 : 1D2Z1





**CPB circuit board**

Item
<b>PERCUSSIVE</b> <b>2 2/3'</b>
<b>POLY-SYNTH</b> <b>Filter circuit</b>  <b>Peak Point</b>  <b>Peak level</b> <b>adjustment</b> <b>(Tone quality</b> <b>adjustment)</b>
<b>+10V</b> <b>adjustment</b>